

# FOOD WEB SCAVENGER HUNT

Tick the small box if you find the item outside,  
then draw it in the bigger box.

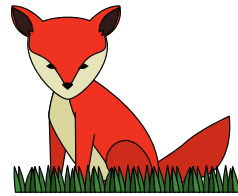
Something that makes its own food (a **producer**)



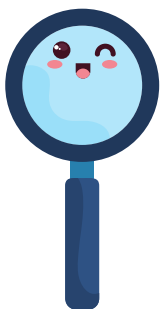
Something that eats plants (a **consumer**)



Something that eats other animals (a **consumer**)



Something that helps break down dead things (a **decomposer**)

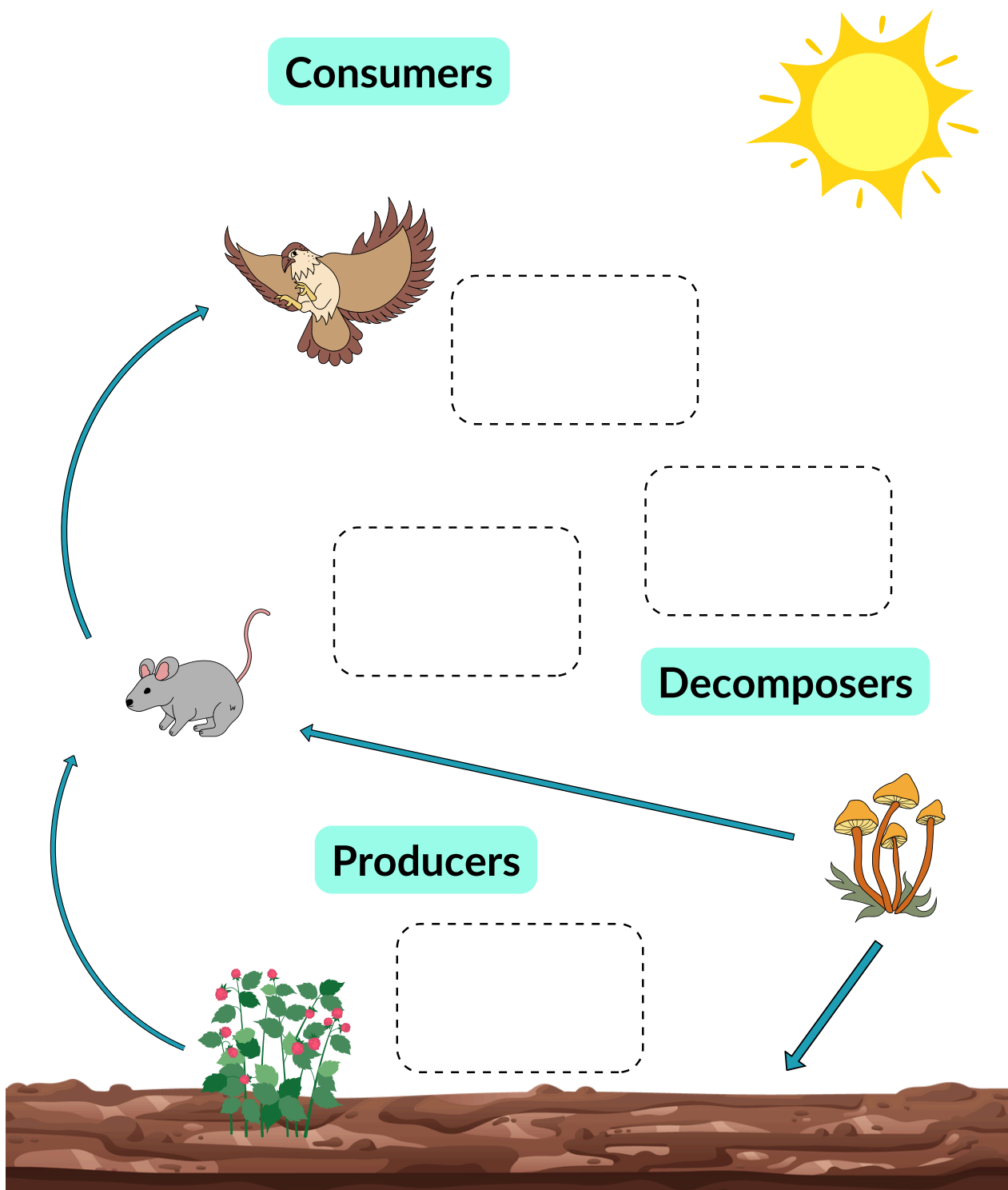


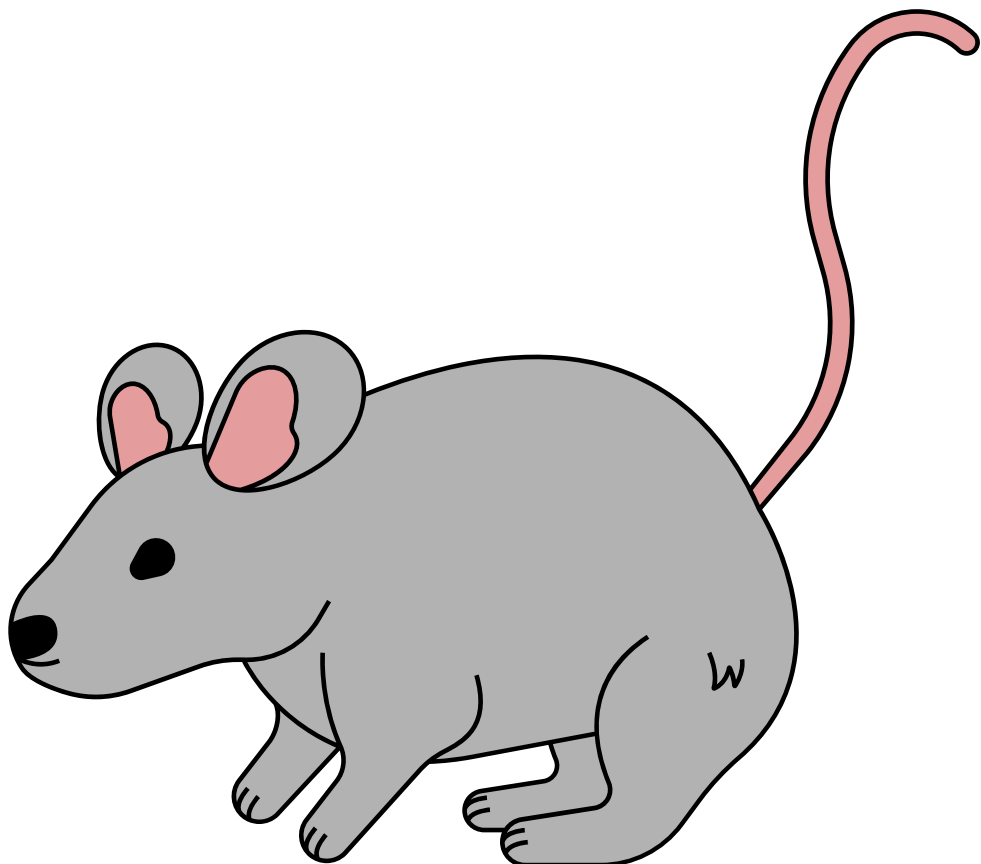
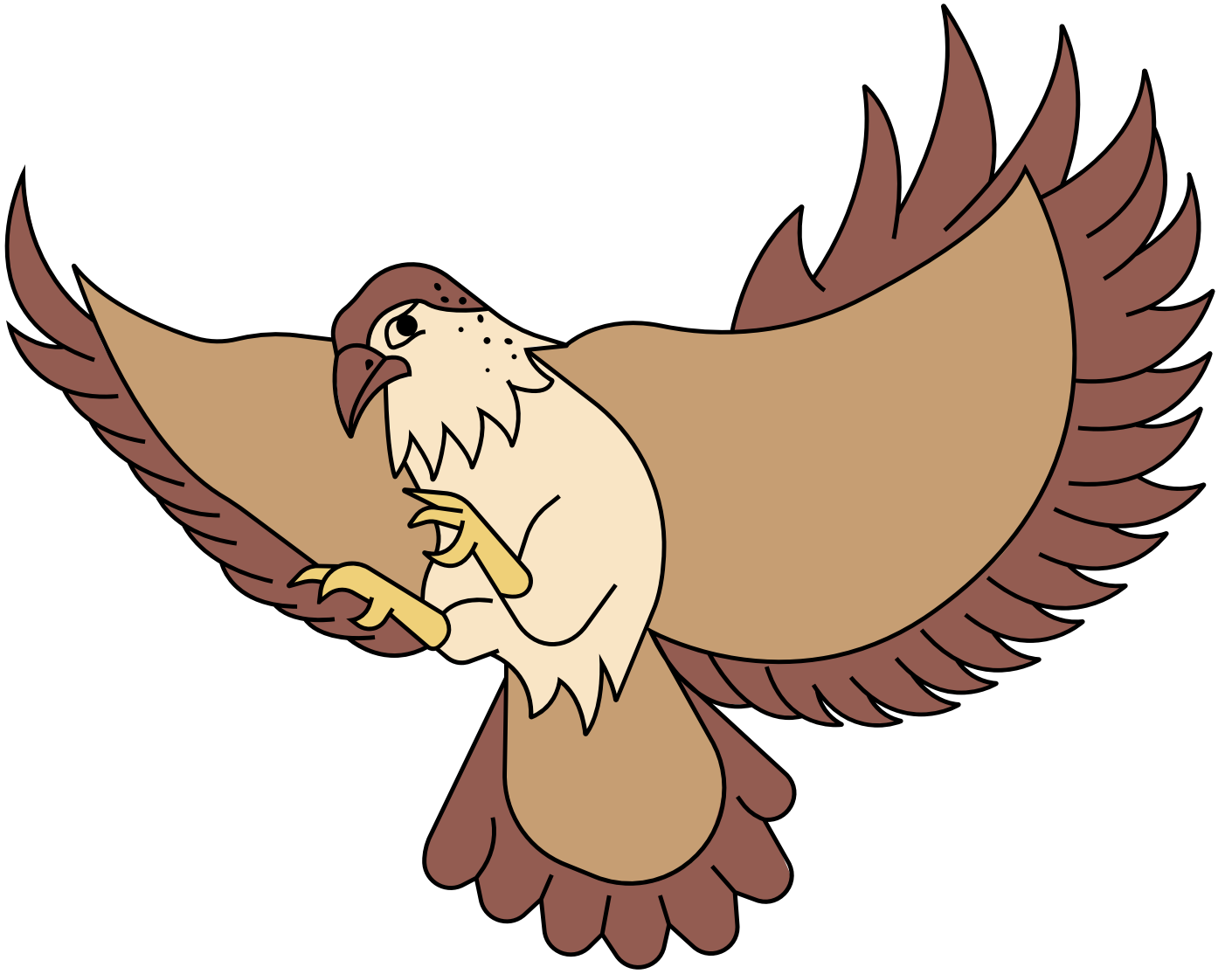
**Bonus:** Something that is non-living but part of the ecosystem

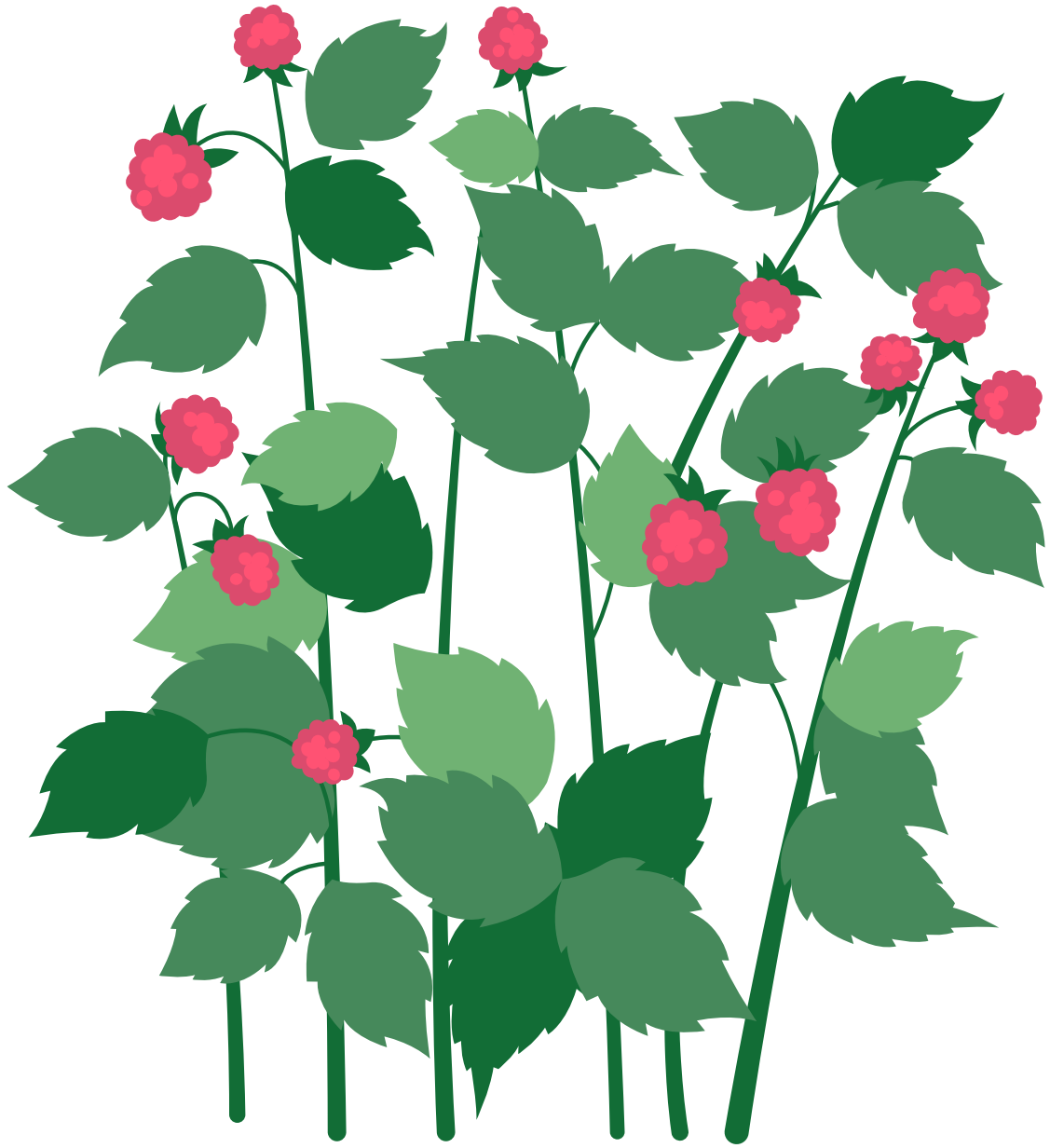
# EXPLORING FOOD WEBS

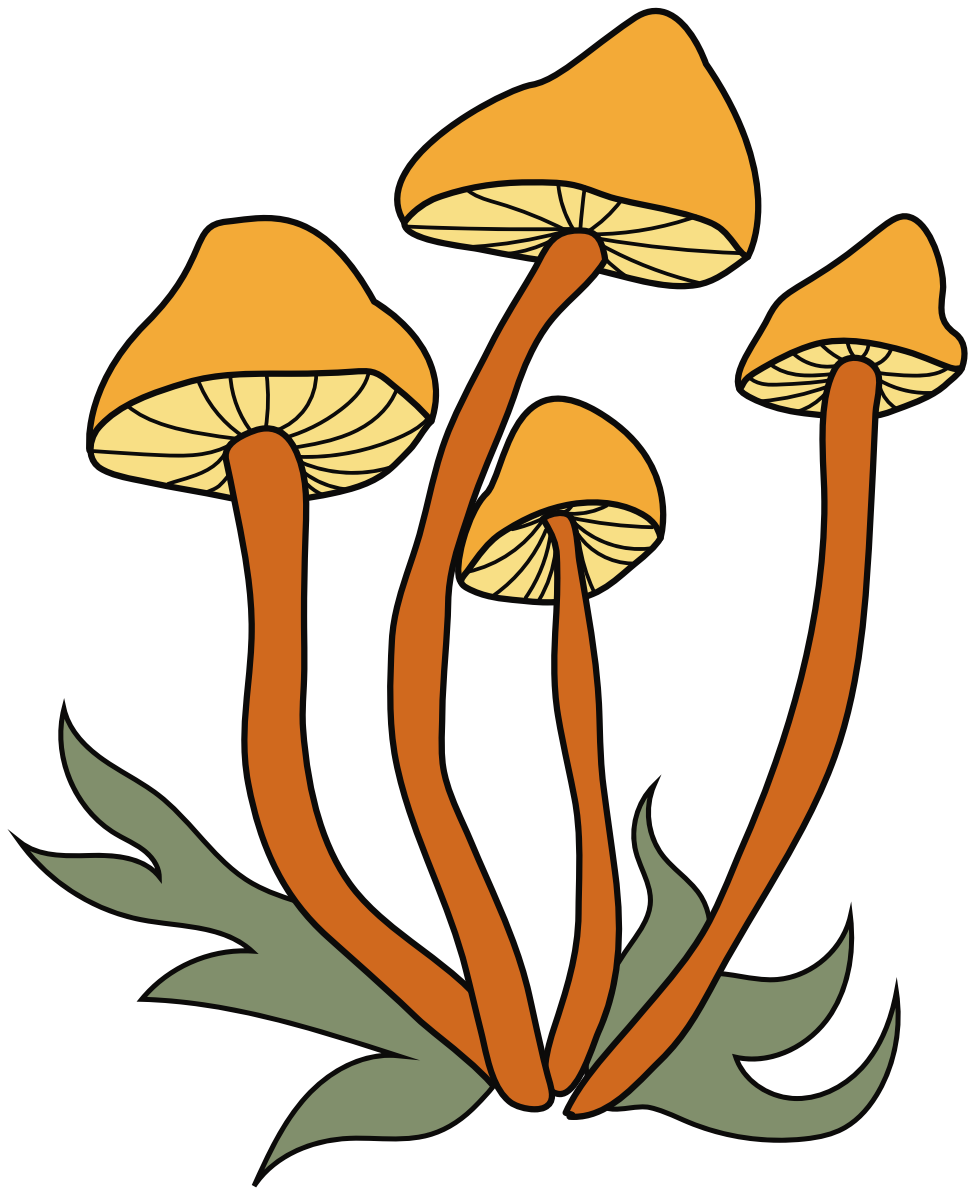
## FOR TEACHER

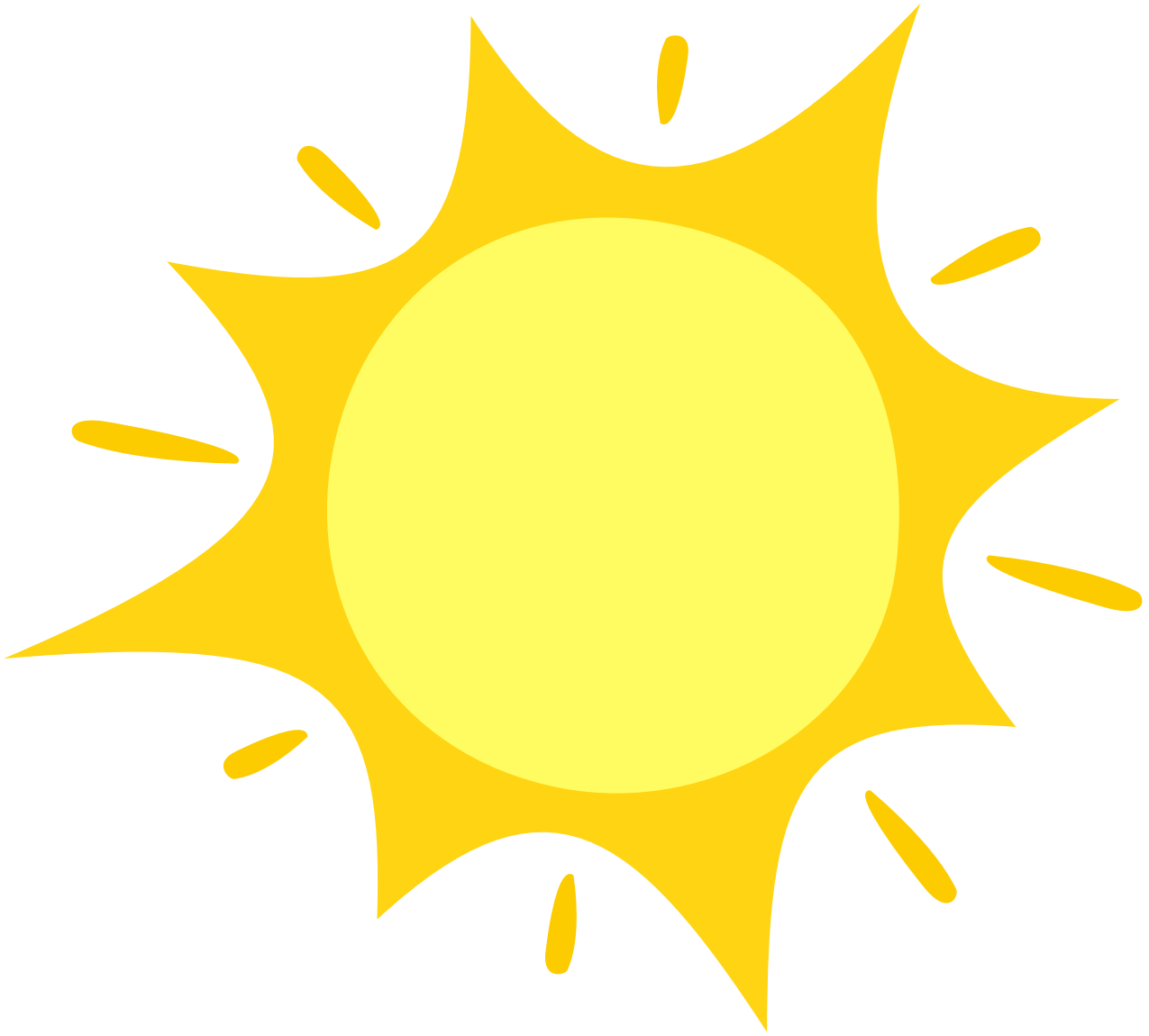
- On a whiteboard or poster, place the labels “Producers,” “Consumers,” and “Decomposers” in similar positions as shown below.
- Add a few elements (sun, soil, berry bush, mouse, hawk, mushroom) to help guide students.
- Students tape/paste their drawings from the scavenger hunt in the correct areas.
- Students draw arrows indicating a relationship between elements, pointing to the organism gaining energy from the other











**Photosynthesis**

**Producers**

**Consumers**

**Decomposers**

# Food Web Word Bank

Energy      Photosynthesis  
Food Chain      Predator  
Ecosystem      Habitat  
Nutrients

## Producers

Sunlight  
Grass  
Trees  
Algae  
Flowers  
Seeds  
Leaves

## Consumers

Herbivores: Rabbit, Deer, Caterpillar, Grasshopper, Cow, Horse  
Carnivores: Hawk, Wolf, Lion, Snake, Fox, Owl, Shark  
Omnivores: Bear, Human, Raccoon, Pig, Crow  
Scavengers: Vulture, Hyena, Raccoon

## Decomposers

Fungi  
Bacteria  
Mushrooms  
Mold  
Earthworm